

WARRANTY CLARIFICATION:

1. The manufacturer will provide all parts and labor at no cost for a period of (90) ninety days following the installation and startup of the dispensers. The manufacturer shall also make any repairs necessary resulting from a manufacturing or fabrication defect for a period of (1) one year.
2. Further, the manufacturer shall replace at no cost all parts (except lexan loading doors) for a period of (1) one year, but not labor following the initial (90) ninety days.
3. Each dispenser is furnished with complete instructions for set-up, operations and cleaning as noted above. Failure to follow these instructions may void the warranty. The manufacturer can not be held responsible for damage or conditions which may have been caused by neglect, ignorance or improper usage. The end user shall bear full responsibility for all costs related to service calls when it is determined that employees or management have failed to properly execute the normal operating and cleaning procedures or maintenance.
4. Failure by the end user to install the dispenser on a stable platform and damage resulting from this unstable condition, may void the warranty. Do not install the dispensers on pedestal tables, undersized tables or carts nor any other equipment which could result in the accidental tripping or dropping of the dispenser.
5. Service work performed by unauthorized service companies, in-house mechanics or management, without first notifying the manufacturer as to identify the problem may also void the warranty. When in doubt, contact the manufacturer or an area representative prior to any repair work that may appear to require component replacement or repair.

Visit us online for FAQs, Trouble Shooting tips,
Replacement Parts, Product Spec Sheets,
& Instructional Videos.

TexicanSpecialty.com

Scan This & Visit Our Website



Texican Tostada Dispensers

Assembly Manual

Instructions for assembly of our Portable Stand, Model #TSS.

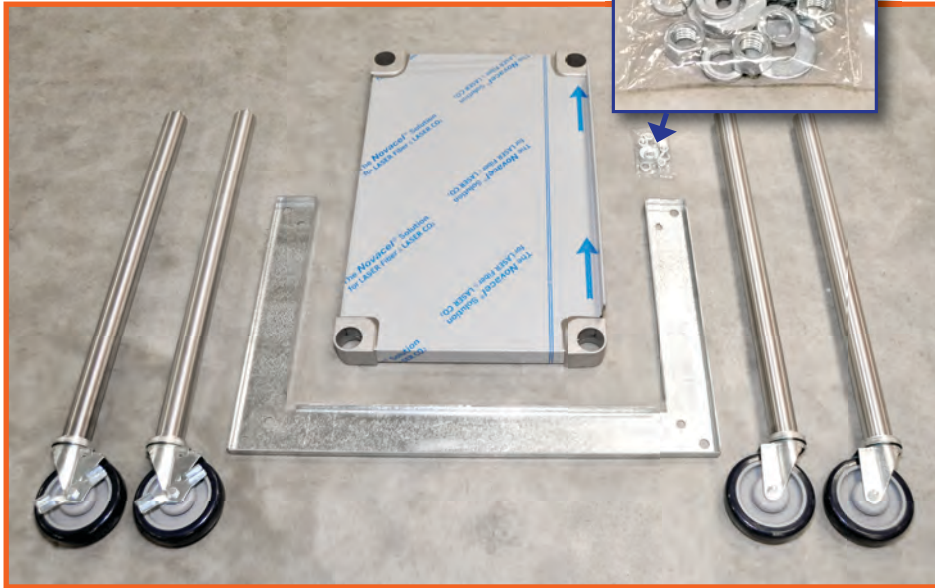


MODEL TSS



TexicanSpecialty.com • 1(800) 869.5918

WHAT'S IN THE BOX:



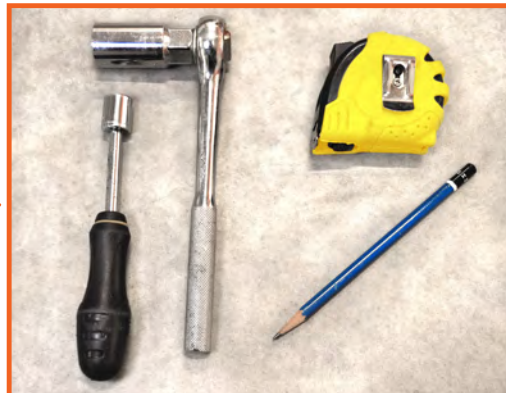
1. Check the exterior condition of the shipping carton.
2. Remove all contents from carton. The carton should contain:
 - (4) legs with casters - (2) of which will have foot brakes
 - (1) adjustable stainless steel shelf with (4) corner clamps
 - (1) "U" shaped flange G.I. upper frame
 - (1) packet of instructions & assembly fasteners, including the following:

- 4 ea. - 1/2" plated lock washers
- 4 ea. - 1/2" plated hex nuts
- 4 ea. - 1/2" x 1 1/4" hex nut bolts (if shipped separate from dispenser)
- 4 ea. - standard 3/8" diameter washers

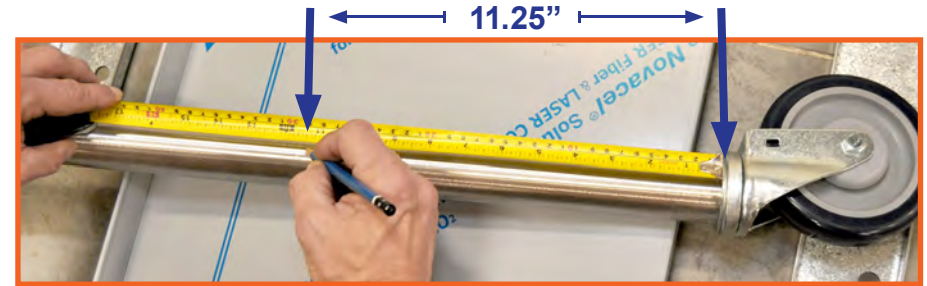


TOOLS NEEDED

- 17/32" Nut Driver
- 3/4" Wrench
- Tape Measure
- Pencil



1. **Establish the height of the shelf from the floor.**
Using the tape measure and your pencil, mark all of the legs at the desired height.
Note: 16"-18" from the floor is generally a good height for the shelf.



2. **Insert the legs into the corner clamps of the adjustable shelf up to the pencil mark.**
The rear of the shelf has a flanged vertical splash. The casters should be below the splash and flanged sides of the shelf.
Note: The legs with the brakes should be inserted at the rear of the stand.

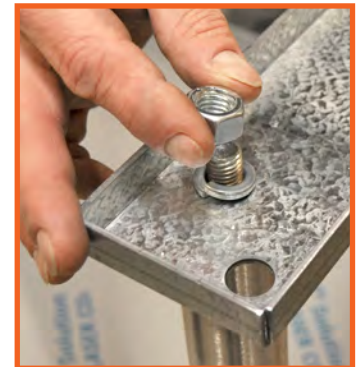


3. **Secure the corner clamps with bolts provided in the center of the clamp.**
Use the 17/32" nut driver (or socket) to hand-tighten the nuts on the corner clamps. After all the legs are secured, stand the unit up on its casters and make sure that your shelf is level. If not, adjust as necessary.



4. **Mount the "U" shaped G.I. frame onto the leg mounted bolts, open side up.**

The open end of the "U" frame should be facing the front of the stand. Using the inside holes, place 1/2" plated split lock washer over each of the 1/2" diameter threads projecting through the upper frame and secure with 1/2" plated hex nuts and hand-tighten. After all nuts are in place, tighten with 3/4" wrench.



5. **Lock casters THEN place chip dispenser on top of frame.**

From underneath, insert the 1 1/4" x 1/2" bolt plus a flat washer up through each of the remaining holes in the "U" shaped frame into the dispenser. Hand-tighten each. Once all bolts are set, drive the bolts home with the 3/4" wrench.